

Description

Model 680A is a heavy duty air operated grease gun suitable for 450gm grease cartridges or bulk grease filling via the filler nipple. The gun provides the flexibility of a continuous flow of grease or one shot trigger action of 0.6 ccm of grease. The gun comes complete with a 75cm long high pressure flexible extension and hydraulic coupler. (480A 400gm model also available)

Specifications

Uses	Air Operated Grease Gun - 450gm grease cartridge fill OR Bulk grease fill
Discharge Quantity	Single Shot: 0.6 ccm / Continuous Flow: 250 gm per minute (without counter pressure)
Grease Pressure	50 times the air pressure (50:1)
Min/Max Air Pressure	Min: 30 PSI / Max: 145 PSI
Air consumption	65 ccm per stroke

Operating instructions

Before connecting the gun to the compressed air, check if the barrel is filled with grease. There are two ways to fill the gun with grease:

A) 450gm Grease Cartridge:

Unscrew the grease barrel from the gun and insert the 450gm grease cartridge by holding the barrel assembly & pulling the rod back. Remove both caps from the cartridge, insert the cartridge into the barrel & then rescrew the barrel assembly back onto the gun so that the cartridge sits well against the grease filter. Once in position, press the clamp down & push the rod back into the barrel.

Important to note:

When using the gun with a cartridge, the follower cup must be folded back. The gun is supplied standard with the follower cup in this position.

B) Bulk Grease Loading:

Unscrew the grease barrel from the gun & insert the barrel into the bulk grease. Suck the grease up into the barrel by pulling the rod all the way back. When barrel is full with grease, rescrew the barrel assembly back onto the gun so that the grease filter sits well against the grease. Press the clamp down & push the rod back into the barrel.

Important to note:

- 1 When using the gun with bulk grease, the follower cup must be folded forward. To do this you have to take the follower cup and rod assembly out of the barrel, fold the follower cup forward and reassemble the barrel assembly.
- 2 Connect the gun to the air compressor via the coupler below the handle.
- 3 Press the air release valve down until grease appears.
- 4 Pull the gun trigger until grease is forced out of the hydraulic coupler.



Maintenance

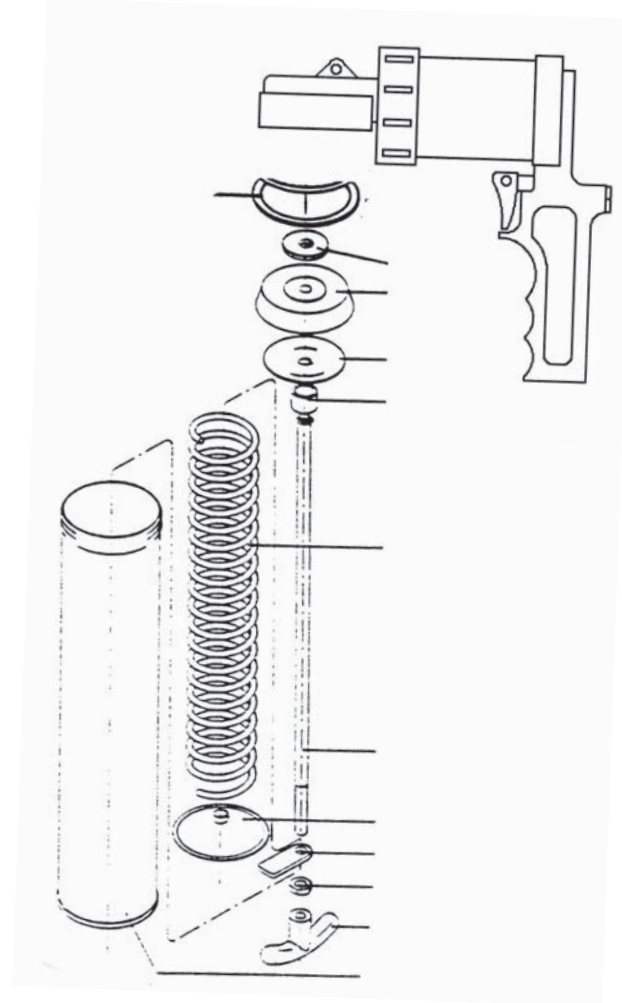
Cleaning: always keep your air supply clean and lubricated using a filter/lubricator (model 06811 is available). Your grease should be clear of any foreign particles, dirt etc and the gun should be checked and cleaned regularly.

Trouble Shooting

Air pockets in grease:

If the gun is cycling but no grease is appearing from the coupler. Unscrew the flexible extension from the gun head, activate gun and wait till grease splatters out. This is the air pocket being released.

Parts And Drawing Breakdown For The 680A



Ordering Spare Parts

Parts List – Part No. 680A Air Operated Grease Gun

Part No.	DESCRIPTION	QTY.
680A-1	Air Motor Head Assembly	1
680A-2	Adaptor	1
600A-B	450gm Barrel Complete	1
14553	70cm Flex Extension	1
14513	Grease Coupler	1
660A-1	Barrel	1
660A-2	T-grip handle	1
660A-3	Hex nut	1
660A-4	Arrester clamp	1
660A-5	Barrel cover insert	1
660A-6	Draw rod	1
660A-7	Spring	1
660A-8	Distance holder	1
660A-9	Forming disc	1

Part No.	DESCRIPTION	QTY.
660A-10	Follower cup	1
660A-11	Washer	1
660A-12	Ring	1
600A-13	Grease gun head	1
660A-23	outlet	1
660A-20	Filler nipple	1
660A-22	O ring	2
600A-17	U strap	1
660A-18	Rivets	2
660A-19	Rivets	1
600A-20	Piston	1
600A-21	Lever	1
600A-22	Black handle grip	1

Head Office NSW
TEL: (02) 9939 0711
FAX: (02) 9939 0411

VIC
TEL: (03) 8787 8288
FAX: (03) 8787 8266

QLD
TEL: (07) 3889 8480
FAX: (07) 3889 8490

SA/NT
TEL: (08) 8241 7111
FAX: (08) 8241 7011

WA
TEL: (08) 9209 3066
FAX: (08) 9209 3933

TAS
TEL: (03) 6343 0477
FAX: (03) 6343 0911